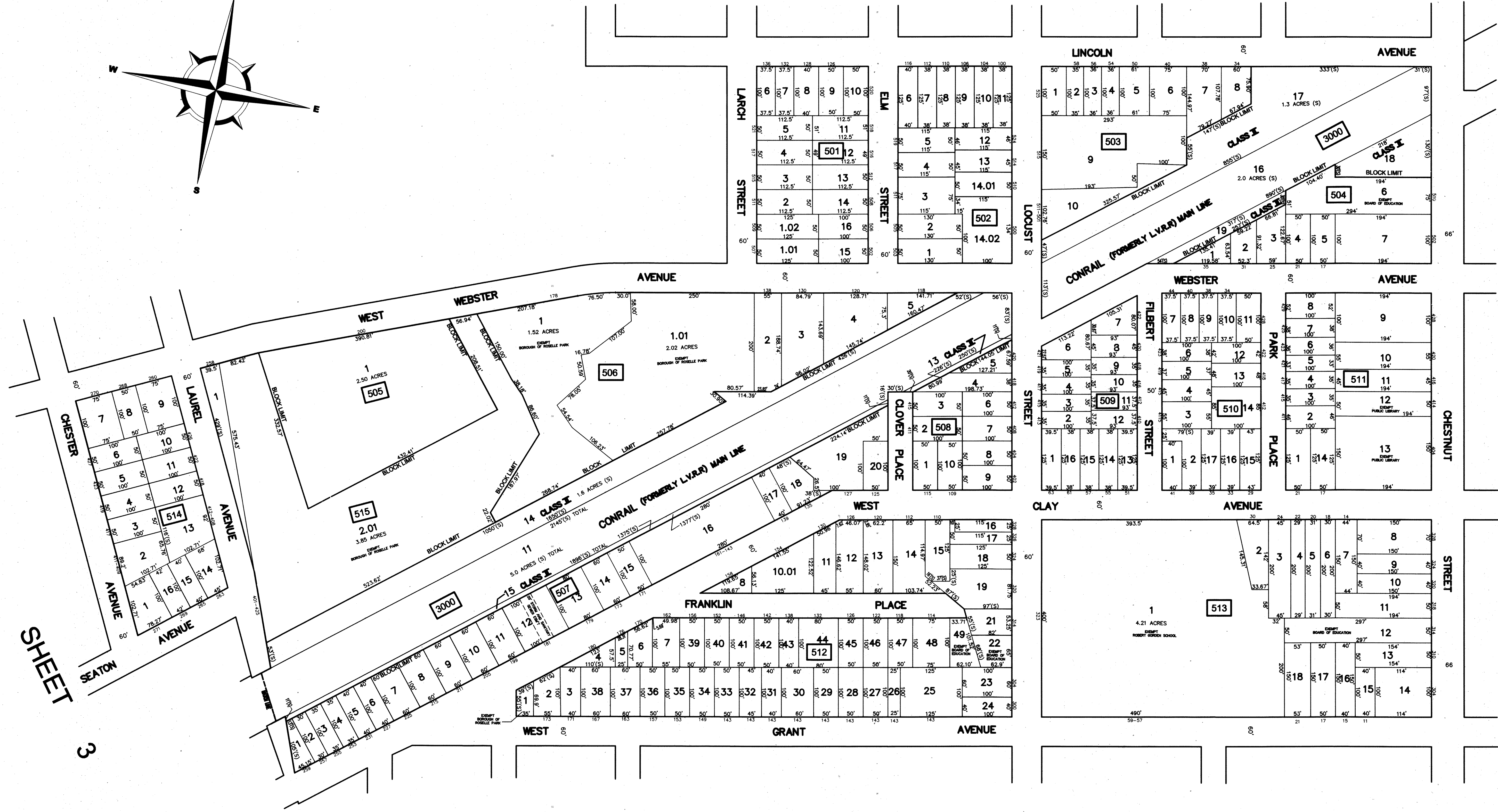
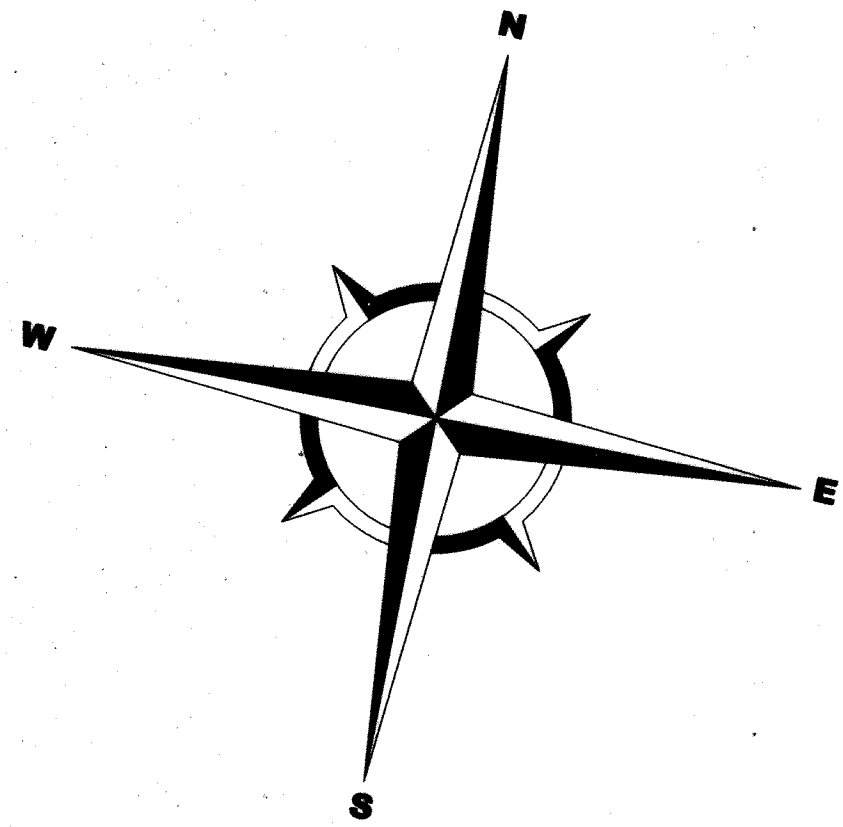


SHEET 4.1



SHEET 6

SHEET 8

SHEET 3

REVISIONS		
DATE	NAME	LICENSE #

THIS SHEET HAS BEEN DRAWN USING COMPUTER AIDED DRAFTING (CAD).

NEW JERSEY DEPARTMENT OF THE TREASURY
 DIVISION OF TAXATION
 PROPERTY ADMINISTRATION TAX MAP SECTION
 APPROVED AS A TAX MAP PURSUANT TO THE
 AUTHORITY OF N.J.S.A. 17-16 & N.J.S.A. 54-20-1
 FOR THE DIRECTOR, DIVISION OF TAXATION

John J. DeLeon CTA Supervising Field Rep
 See Division, CTA Supervising Field Rep

AUG 28 2014 1044

DATE: _____ SERIAL NO. _____

TAX MAP
BOROUGH OF ROSELLE PARK
 UNION COUNTY, NEW JERSEY
 SCALE: 1" = 100'
 MICHAEL J. NEGLIA, P.E. P.L.S. P.P.
 NEW JERSEY LICENSE NUMBER 38604
 34 PARK AVENUE, LYNDHURST NEW JERSEY
 TO SHOW CONDITIONS AS OF SEPTEMBER 1, 2013