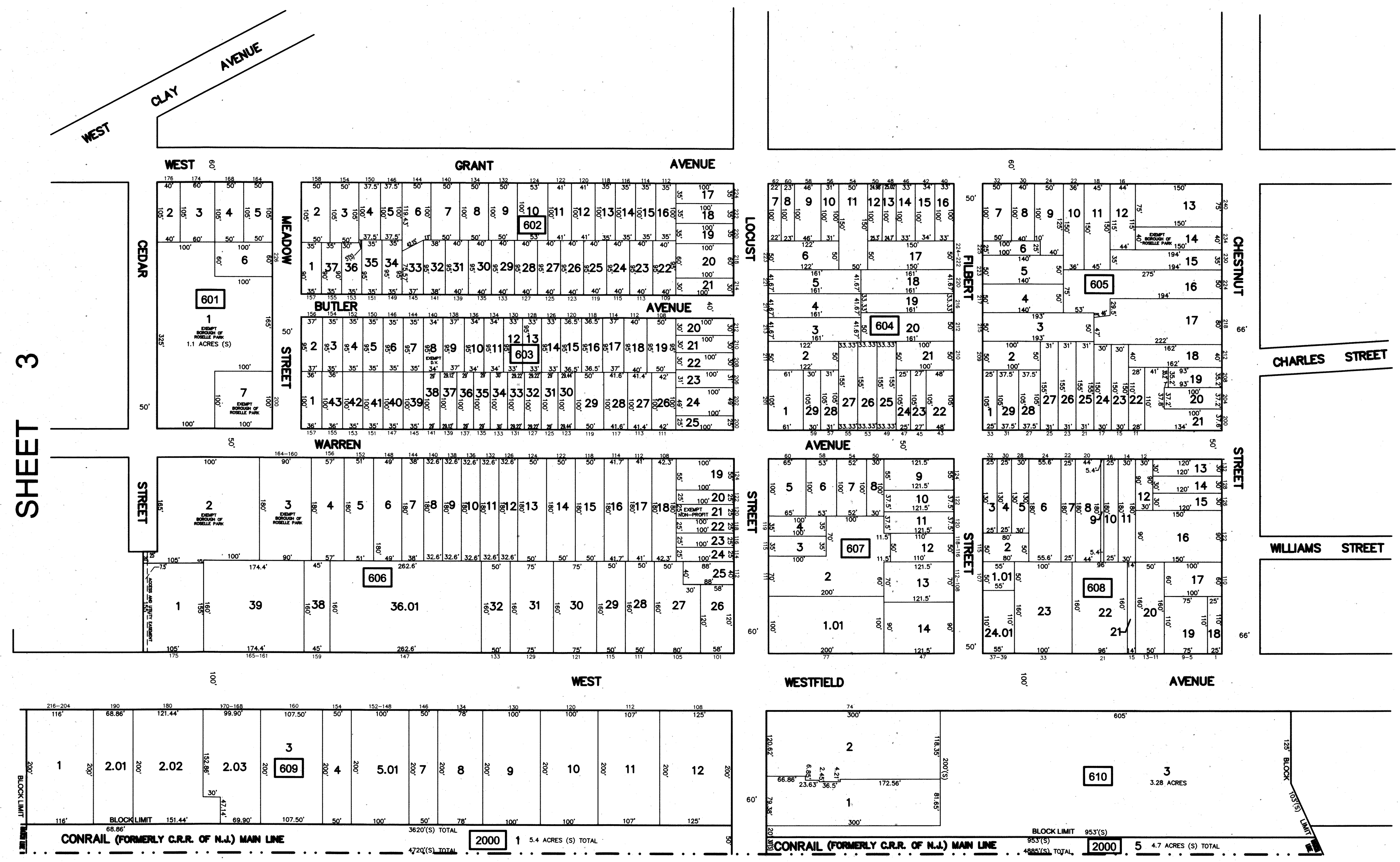
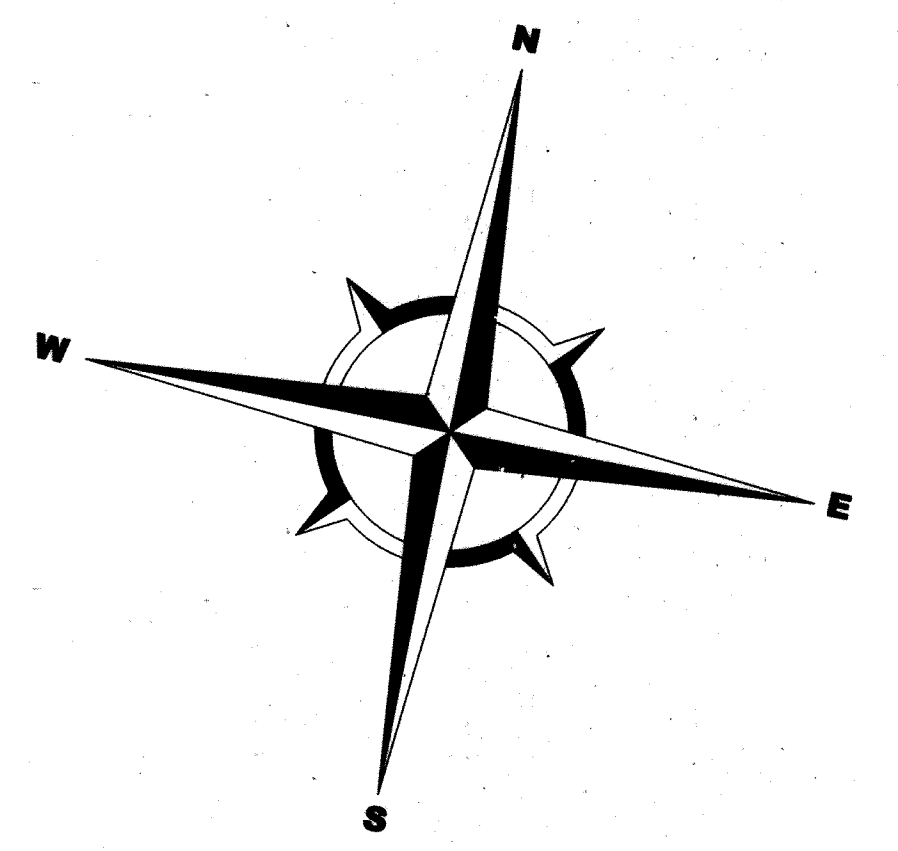


SHEET 5



SHEET 3

SHEET 9

BOROUGH OF ROSELLE COUNTY OF UNION

| REVISIONS | | |
|-----------|------|-----------|
| DATE | NAME | LICENSE # |
| | | |
| | | |
| | | |
| | | |
| | | |
| | | |
| | | |
| | | |
| | | |
| | | |

THIS SHEET HAS BEEN DRAWN USING COMPUTER AIDED DRAFTING (CAD).

NEW JERSEY DEPARTMENT OF THE TREASURY
 DIVISION OF TAXATION
 PROPERTY ADMINISTRATION TAX MAP SECTION
 APPROVED AS A TAX MAP PURSUANT TO THE
 AUTHORITY OF N.J.S.A. 54:1-15 & N.J.S.A. 54:5-1
 FOR THE DIRECTOR, DIVISION OF TAXATION

John D'Amico CTA Supervising Field Rep
Steph D'Amico CTA Supervising Field Rep

DATE: **AUG 28 2014** SERIAL NO. **1044**

TAX MAP
BOROUGH OF ROSELLE PARK
 UNION COUNTY, NEW JERSEY
 SCALE: 1" = 100'
 MICHAEL J. NEGLIA, P.E. P.L.S. P.P.
 NEW JERSEY LICENSE NUMBER 38604
 34 PARK AVENUE, LYNDHURST NEW JERSEY
 TO SHOW CONDITIONS AS OF SEPTEMBER 1, 2013