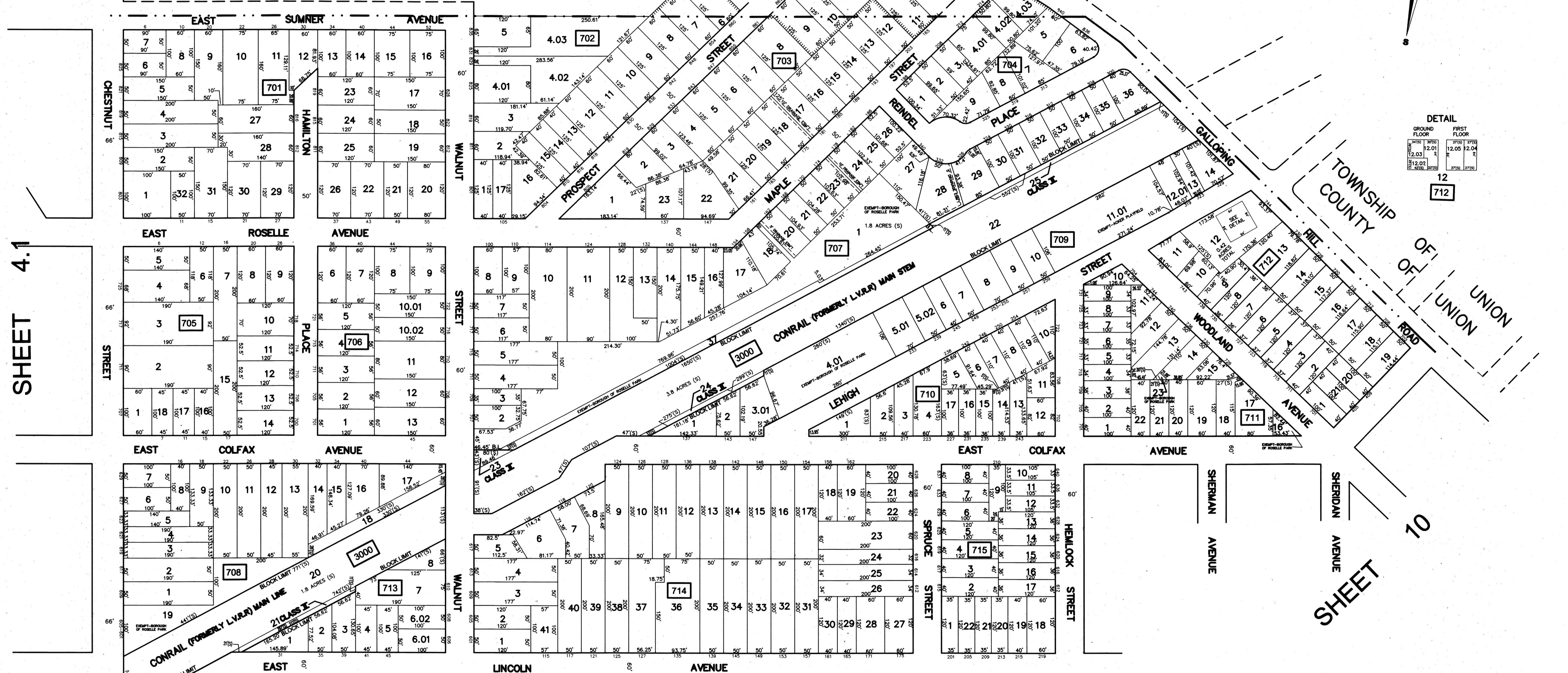


TOWNSHIP OF UNION
COUNTY OF UNION



DETAIL

GROUND FLOOR	FIRST FLOOR
2400	2700
12.03	12.05
12.02	12.04
2700	2700
12	12

712

SHEET 4.1

SHEET 10

SHEET 8

REVISIONS

DATE	NAME	LICENSE #

NEW JERSEY DEPARTMENT OF THE TREASURY
DIVISION OF TAXATION
PROPERTY ADMINISTRATION TAX MAP SECTION
APPROVED AS A TAX MAP PURSUANT TO THE
AUTHORITY OF N.J.S.A. 54:1-16 & N.J.S.A. 54:6-1
FOR THE DIRECTOR, DIVISION OF TAXATION

CTA Supervising Field Rep
See Division, CTA Supervising Field Rep

DATE: **AUG 8 2014** SERIAL NO.: **1044**

TAX MAP
BOROUGH OF ROSELLE PARK
UNION COUNTY, NEW JERSEY
SCALE: 1" = 100'
MICHAEL J. NEGLIA, P.E. P.L.S. P.P.
NEW JERSEY LICENSE NUMBER 38604
34 PARK AVENUE, LYNDHURST NEW JERSEY
TO SHOW CONDITIONS AS OF SEPTEMBER 1, 2013

THIS SHEET HAS BEEN DRAWN USING COMPUTER AIDED DRAFTING (CAD).